

# CARRIER FORCE™ SANTA CRUZ MIDWAY SOLOMONS CORAL SEA



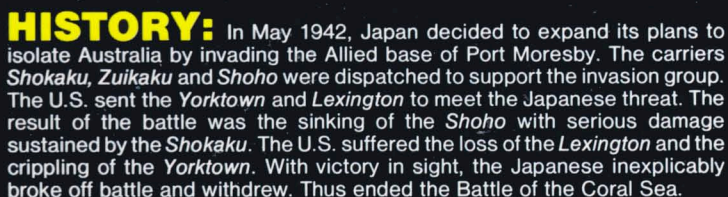
STRATEGIC SIMULATIONS INC

40K  
ATARI®



For the Atari®400/800/  
1200 with BASIC  
Cartridge.





In later months, the remaining carriers *Shokaku* and *Zuikaku* were called on to support the attack on Guadalcanal. No clear winner emerged from the two carrier clashes that followed — the Battle of the Eastern Solomons and of Santa Cruz. In a wider view, however, the U.S. must be considered the victor since Henderson Field never fell.

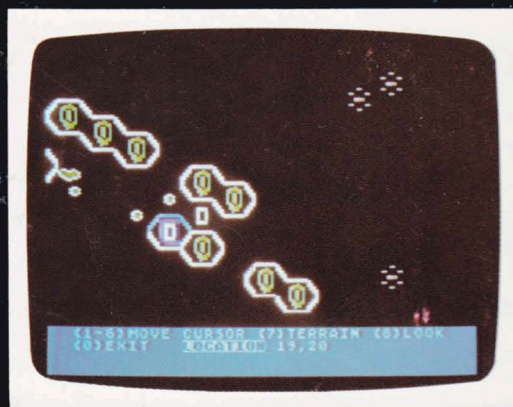
**HISTORY REPLAYED:** CARRIER FORCE™ simulates every last detail of these four major flat-top battles. Every major warship and plane is fully accounted for and accurately rated. Combat is resolved down to the last plane! And just as in the real battles, carriers must turn into the wind in order to launch planes.

So detailed is this game that you must play flight-deck manager, shuttling up to 36 plane operations — landings and launchings — in one turn (one hour). Planes must also be readied and loaded with the right bombs.

Real naval warfare conditions are re-created: weather, night time, visibility, inaccurate sightings... Seaplanes must be launched to search the wide Pacific for the enemy. Combat Air Patrols must be constantly sent up to protect the task forces. This is especially important for the Japanese since they do not have radar — a priceless tool available to the U.S. after Coral Sea.

As complex as this game sounds, it is very easy to play: The computer handles all administrative chores, leaving you to give all the orders and to plot the strategies — just like a real admiral!

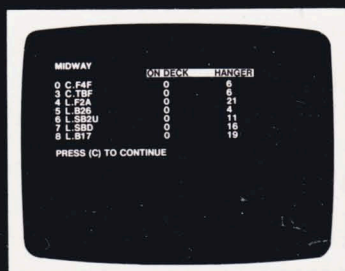
For one or two players. In solitaire, the computer plays the Japanese.



**Above: The actual tracks of U.S. and Japanese carriers during the real Battle of the Coral Sea, May, 1942.**

**Left: Hi-Res color graphics show the Solomon Islands.**

**Below: Four sample data displays showing the richness of detail you'll find in CARRIER FORCE**



**Aircraft status display for the U.S. base of Midway.**



**Display of the main Japanese carrier force at Midway.**